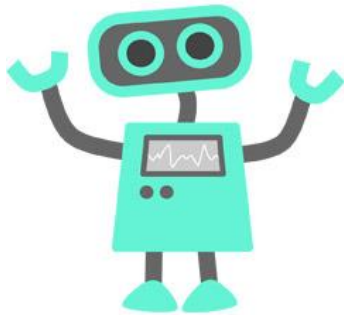


EARLE B. WOOD
MIDDLE SCHOOL



We are RESPECTFUL
we are RESPONSIBLE
we are READY TO LEARN

After School Activity Booklet



2019-2020



AFTER SCHOOL ACTIVITIES & SPORTS/INTRAMURALS CONTACT INFORMATION

MAIN OFFICE: 301-460-2150

MS. HEIDI SLATCOFF: PRINCIPAL
MS. ROSE ALVAREZ: ASSISTANT PRINCIPAL
MR. GEOFF PRIN: ASSISTANT PRINCIPAL
MR. ROBERT WATSON: ASSISTANT PRINCIPAL
MR. BILL ALLEN: INTRAMURAL COORDINATOR
MR. JASON THIBEAULT: INTRAMURAL DIRECTOR
MR. KEVIN MONROE: ATHLETIC COORDINATOR
MS. MAUREEN HIGGINS: RecXtra AFTER SCHOOL ACTIVITIES COORDINATOR

GENERAL INFORMATION

- After School Activities run Tuesdays, Wednesdays & Thursdays 3:10– 4:25pm.
- Any student not under the direct supervision of an adult in the building must exit the building by 3:15pm.
- After school buses are available Tuesdays, Wednesdays & Thursdays ONLY for students who *PARTICIPATE* in a sponsored after school activity, or is with a teacher. Students *MAY NOT LEAVE THE PREMISES* and return to take the bus.
- Please note that we only offer TWO after school activity buses and seats are limited. We ask that any student staying who has available parent/guardian pick-up please take advantage of these alternate transportation opportunities when possible. The blue Ride On buses are now free for students as well.
- ***Parents, if you are picking up your student between 4:00 - 4:35pm, do not park in the top bus lanes. You may wait in the lower bus lanes, closer to the basketball courts. Thanks!***

ACADEMIC ELIGIBILITY FOR INTRAMURAL AND EXTRACURRICULAR ACTIVITIES

- GPA of 2.0 for the previous marking period – may have only one E.
- Academic/Mentor-based activities are the only exceptions for participating without eligibility.

EDP Academic Support

Sponsor: Ms. Rose Alvarez

Room: **TBD**

Meeting Day(s): **TBD**

Time of year: November 1 – April 6

Description: This Extended Day Program (EDP) is a learning opportunity for *math and literacy support*, by invitation only. The goals of this program are to provide additional academic support to students so that they are able to access on-grade-level curriculum. Parents with any questions regarding enrollment in the program should contact the EDP coordinator, Ms. Alvarez.



Girls On The Run

Sponsor: Ms. Taplar

Room: **234**

Meeting Day(s): **Wednesdays and Thursdays**

Time of year: February - April

Description: Develop self-respect and healthy lifestyles through dynamic, interactive lessons and running games, culminating in a celebratory 5k run.

Green Team

ENERGY AND RECYCLING CLUB

Sponsor: Ms. Elizabeth Marquette

Room: **287**

Meeting Day(s): **Tuesdays and Thursdays**

Time of year: October – May

Description: Open to all grade levels. Any student interested in helping to assist the environment and school recycling initiative. **SSL hours available.**



GSA

Sponsor: Ms. Cher Agranov, Ms. Jennifer Espinoza

Room: **251**

Meeting Day(s): **Tuesdays**

Time of year: October – May

Description: A student-led organization that is intended to provide a safe and supportive environment for lesbian, gay, bisexual, transgender, and queer/questioning (sexuality and gender) (LGBTQ) youth and their straight allies. Our Mission is to create a safe supportive environment for LGBTQ youth and their supporters through social gatherings and activism activities. We will strive to improve the tolerance and climate in the Earle B. Wood community for all.

POSITIVE RESULTS

- Safe Space and support for Students
- Grades improving
- Leadership skills
- Behavior improving
 - Positive relationship building
- Students reaching out for help

**DIVERSE
INCLUSIVE
ACCEPTING
WELCOMING
SAFE SPACE
FOR EVERYONE**

When:

**Tuesday
After
School
Room 251**

Sponsors:

**Ms. Espinoza
Ms. Agranov**



GSA

**Genders &
Sexualities
Alliance**

For support of LGBTQ
& Ally youth



What is the GSA:

A student-led organization that is intended to provide a safe and supportive environment for lesbian, gay, bisexual, transgender, and queer/questioning (sexuality and gender) (LGBTQ) youth and their straight allies.



A GSA CAN:

- offer LGBTQ youth crucial Support & Resources, & reduce their risks
- send a strong Anti-Bullying message to whole school
- support & engage other Ally Students who have LGBTQ parents, siblings, or friends, or just care about social justice
- identify at least one clear, strong Staff Advocate for LGBTQ youth issues
- give a positive message to LGBTQ/Ally School Staff, whether out or not
- signal to Parents w/ LGBTQ kids who Seek an LGBTQ-friendly school
- teach youth Leadership, Empowerment, & Peer Support

MISSION

Our Mission is to create a safe supportive environment for LGBTQ youth and their supporters through social gatherings and activism activities. We will strive to improve the tolerance and climate in the Earle B. Wood community for all.

- Social
- Support
- Activism

SAFE
SPACE LGBTQIA